

SCREENCOLLECTION

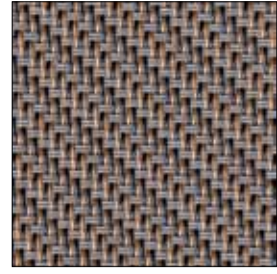
POLYSCREEN® 550 LUMINOUS



ARIZONA 10550061

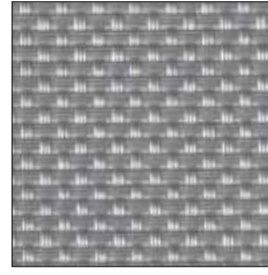


SAHARA B 10550062

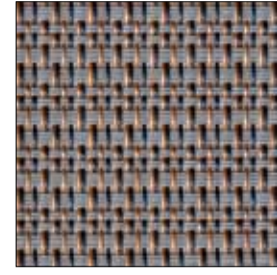


SAHARA A 10550063

	composition	weight [g/m ²]	thickness	fire classification	ultraviolet test UV	openness factor [%]	Ts [%]	Rs [%]	As [%]	Tv [%]	application
Arizona	polyester / pvc	511	0.85	M1	7/8	16	15	10	75	16	int/ext
Sahara B	polyester / pvc	554	0.83	M1	7/8	6	10	12	78	10	int/ext
Sahara A	polyester / pvc	554	0.83	M1	7/8	6	10	15	75	11	int/ext
Kalahari	polyester / pvc	548	0.82	M1	7/8	7	23	23	54	23	int/ext
Atacama	polyester / pvc	494	0.85	M1	7/8	11	20	14	66	22	int/ext
Mojave	polyester / pvc	516	0.96	M1	7/8	13	14	8	78	14	int/ext



KALAHARI 10550064



ATACAMA 10550065

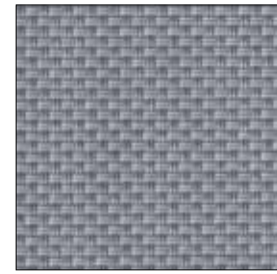


MOJAVE 10550066

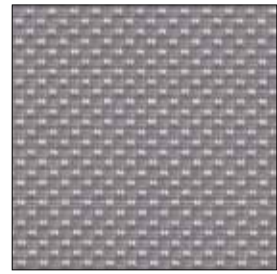
POLYSCREEN® 550 SILVER & GOLD



SILVER-BRONZE 10550041

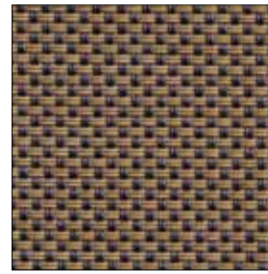


SILVER-GREY 10550042

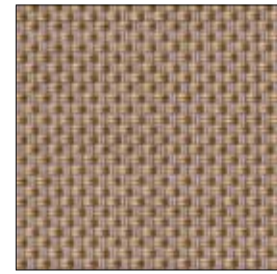


SILVER-SILVER 10550043

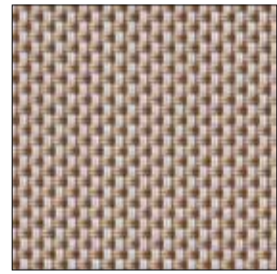
	composition	weight [g/m ²]	thickness	fire classification	ultraviolet test UV	openness factor [%]	Ts [%]	Rs [%]	As [%]	Tv [%]	application
Silver-Bronze	polyester / pvc	555	0.69	M1	8/8	5	18	15	67	20	int/ext
Silver-Grey	polyester / pvc	555	0.69	M1	8/8	5	17	19	64	19	int/ext
Silver-Silver	polyester / pvc	555	0.69	M1	8/8	5	22	27	51	24	int/ext
Gold-Ebony	polyester / pvc	555	0.69	M1	8/8	5	10	8	82	13	int/ext
Gold-Crystal	polyester / pvc	555	0.69	M1	8/8	5	21	19	60	23	int/ext
Gold-Linen	polyester / pvc	555	0.69	M1	8/8	5	14	28	58	14	int/ext



GOLD-EBONY 10550051



GOLD-CRYSTAL 10550052

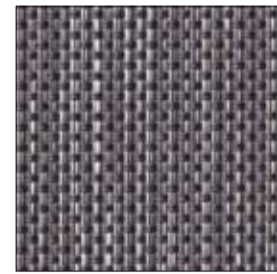


GOLD-LINEN 10550053

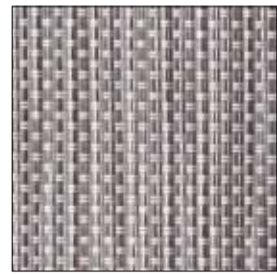
POLYSCREEN® 550 COUPAGE



COUPAGE 1 10550031



COUPAGE 2 10550032



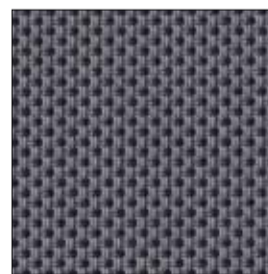
COUPAGE 3 10550033

	composition	weight [g/m ²]	thickness	fire classification	ultraviolet test UV	openness factor [%]	Ts [%]	Rs [%]	As [%]	Tv [%]	application
Coupage 1	polyester / pvc	550	0.69	M1	8/8	5	10	8	82	10	int/ext
Coupage 2	polyester / pvc	550	0.69	M1	8/8	5	12	13	75	12	int/ext
Coupage 3	polyester / pvc	550	0.69	M1	8/8	5	20	21	59	19	int/ext
Coupage 4	polyester / pvc	550	0.69	M1	8/8	5	17	16	67	17	int/ext

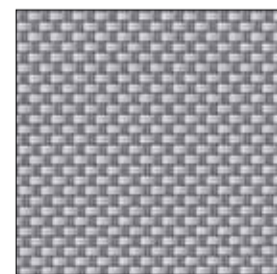


COUPAGE 4 10550034

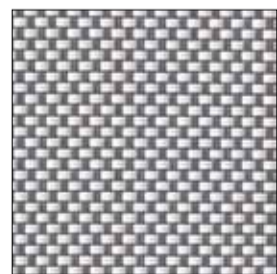
POLYSCREEN® 550



ASH 10550017

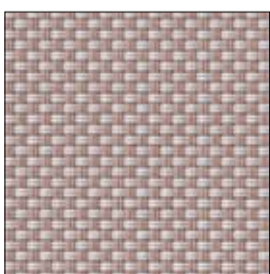


PEARL-GREY 10550013

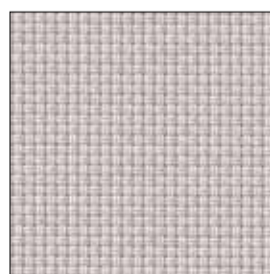


WHITE-GREY 10550012

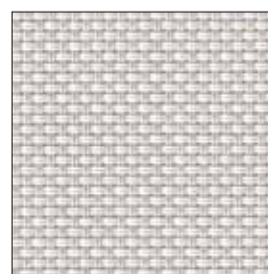
	composition	weight [g/m ²]	thickness	fire classification	ultraviolet test UV	openness factor [%]	Ts [%]	Rs [%]	As [%]	Tv [%]	application
Ash	polyester / pvc	555	0.69	M1	8/8	5	10	8	82	11	int/ext
Pearl-Grey	polyester / pvc	555	0.69	M1	8/8	5	14	22	64	14	int/ext
White-Grey	polyester / pvc	555	0.69	M1	8/8	5	18	31	51	17	int/ext
Pearl-Sand	polyester / pvc	555	0.69	M1	8/8	5	18	29	53	17	int/ext
Pearl-Linen	polyester / pvc	555	0.69	M1	8/8	5	16	38	46	15	int/ext
White-Pearl	polyester / pvc	555	0.69	M1	8/8	5	20	48	32	20	int/ext
White-Linen	polyester / pvc	555	0.69	M1	8/8	5	20	54	26	18	int/ext
White	polyester / pvc	555	0.69	M1	7/8	5	26	64	10	24	int/ext



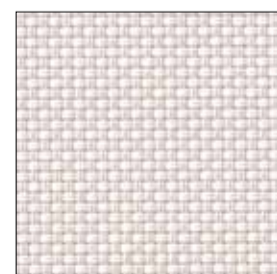
PEARL-SAND 10550023



PEARL-LINEN 10550021



WHITE-PEARL 10550011



WHITE-LINEN 10550019

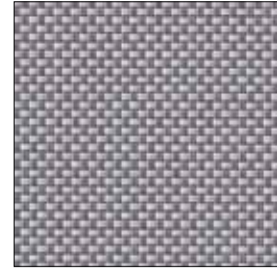


WHITE 10550009

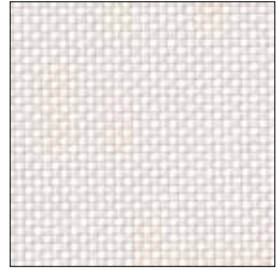
POLYSCREEN® 350



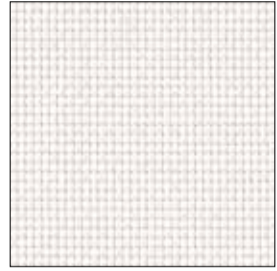
ASH 10350017



PEARL-GREY 10350013



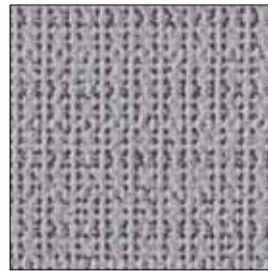
WHITE-LINEN 10350019



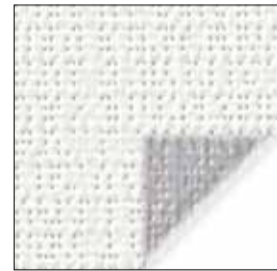
WHITE 10350009

	composition	weight [g/m ²]	thickness	fire classification	ultraviolet test UV	openness factor [%]	Ts [%]	Rs [%]	As [%]	Tv [%]	application
Ash	polyester / pvc	390	0.53	M1	8/8	10	10	6	84	10	int
Pearl-Grey	polyester / pvc	390	0.53	M1	8/8	10	22	23	55	21	int
White-Linen	polyester / pvc	390	0.53	M1	8/8	10	32	55	13	31	int
White	polyester / pvc	390	0.53	M1	7/8	10	33	60	7	32	int

SOLTIS® 92



SILVER-BLACK 50922045



SILVER-WHITE 50922051



SILVER 50922048

	composition	weight [g/m ²]	thickness	fire classification	ultraviolet test UV	openness factor [%]	Ts [%]	Rs [%]	As [%]	Tv [%]	application
Silver-Black	polyester / pvc	420	0.45	M1	5/5	3	3	35	62	3	int/ext
Silver-White	polyester / pvc	420	0.45	M1	5/5	3	10/9	50/70	40/21	10/9	int/ext
Silver	polyester / pvc	420	0.45	M1	5/5	3	8	46	46	8	int/ext
White	polyester / pvc	420	0.45	M1	3/5	3	20	70	10	19	int/ext
Beige	polyester / pvc	420	0.45	M1	5/5	3	11	53	36	8	int/ext
Glossy	polyester / pvc	420	0.45	M1	4/5	3	10	46	44	7	int/ext
Grey	polyester / pvc	420	0.45	M1	5/5	3	6	24	70	5	int/ext
Charcoal	polyester / pvc	420	0.45	M1	5/5	3	5	8	87	5	int/ext



WHITE 50922044



BEIGE 50922002



GLOSSY 50922065



GREY 50922069

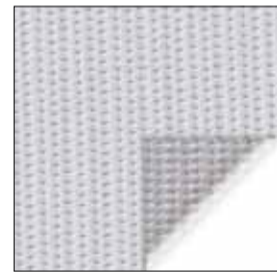


CHARCOAL 50922047

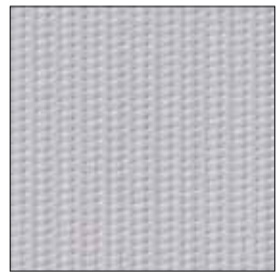
SUNWORKER



WHITE 40SWK005

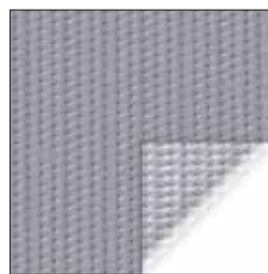


LIGHT GREY-SILVER 40SWM654

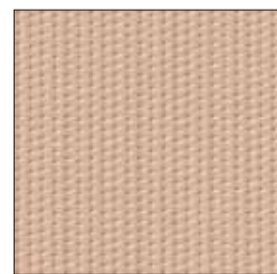


IRON 40SWK653

	composition	weight [g/m ²]	thickness	fire classification	ultraviolet test UV	openness factor [%]	Ts [%]	Rs [%]	As [%]	Tv [%]	application
White	polyester / pvc	330	0.40	M1	6/8	6	23	66	11	21	int/ext
Light Grey/Silver	polyester / pvc	330	0.40	M1	6/8	6	5	35	60	5	int/ext
Iron	polyester / pvc	330	0.40	M1	6/8	6	12	35	53	10	int/ext
Grey/Silver	polyester / pvc	330	0.40	M1	6/8	6	5	35	60	5	int/ext
Sand	polyester / pvc	330	0.40	M1	6/8	6	21	38	41	18	int/ext
Charcoal	polyester / pvc	330	0.40	M1	6/8	6	6	7	87	5	int/ext



GREY-SILVER 40SWM652



SAND 40SWK713



CHARCOAL 40SWK392

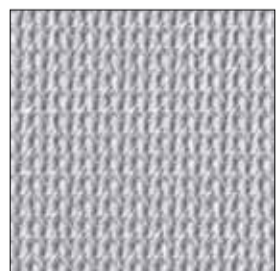
VALMEX® VERANDA



MESH DELUXE WHITE 20754400



MESH PLUS WHITE 20752000

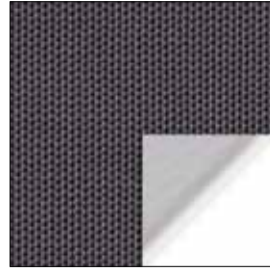


SUPER MESH SILVER 20752301

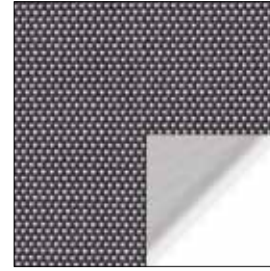
	composition	weight [g/m ²]	thickness	fire classification	ultraviolet test UV	openness factor [%]	Ts [%]	Rs [%]	As [%]	Tv [%]	application
Mesh Deluxe White	polyester / pvc	330	0.43	M1	-	8	-	-	-	-	int/ext
Mesh Plus White	polyester / pvc	470	0.73	M1	-	10	-	-	-	-	int/ext
Super Mesh Silver	polyester / pvc	320	0.39	M1	-	20	-	-	-	-	int/ext

POLYSCREEN® 314

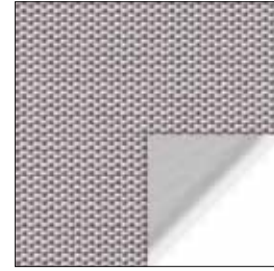
BLACK OUT



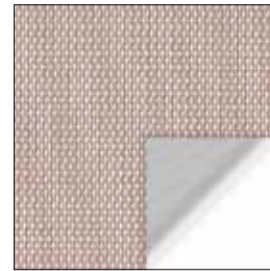
EBONY GREY 10314B20



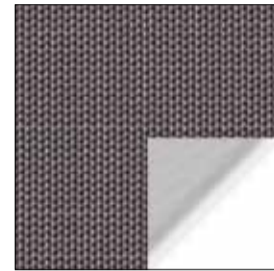
EBONY LINEN 10314B08



LINEN BRONZE 10314B06



LINEN SAND 10314B04



EBONY SAND 10314B10

	composition	weight [g/m ²]	thickness	fire classification	ultraviolet test UV	openness factor [%]	Ts [%]	Rs [%]	As [%]	Tv [%]	application
Ebony Grey	polyester / pvc	489	0.63	Class1	8/8	0	0	40	60	0	int
Ebony Linen	polyester / pvc	489	0.63	Class1	8/8	0	0	40	60	0	int
Linen Bronze	polyester / pvc	489	0.63	Class1	8/8	0	0	40	60	0	int
Linen Sand	polyester / pvc	489	0.63	Class1	8/8	0	0	40	60	0	int
Ebony Sand	polyester / pvc	489	0.63	Class1	8/8	0	0	40	60	0	int

VEROFLEX

BLACK OUT



GREY 35023035



LIGHT GREY 35023028



WHITE 35023001



IVORY 35023144

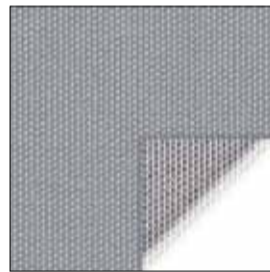
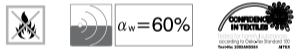


BRONZE 35023041

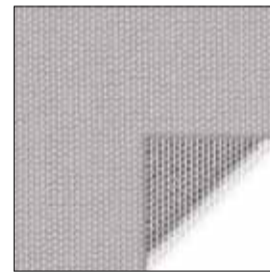
	composition	weight [g/m ²]	thickness	fire classification	ultraviolet test UV	openness factor [%]	Ts [%]	Rs [%]	As [%]	Tv [%]	application
Grey	polyester	340	0.38	M1	5-6/8	0	0	71	29	0	int
Light Grey	polyester	340	0.38	M1	5-6/8	0	0	69	31	0	int
White	polyester	340	0.38	M1	5-6/8	0	0	66	34	0	int
Ivory	polyester	340	0.38	M1	5-6/8	0	0	70	30	0	int
Bronze	polyester	340	0.38	M1	5-6/8	0	0	71	29	0	int

VEROGLIM

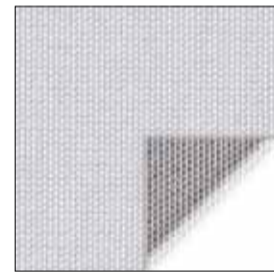
ACOUSTIC



GREY-SILVER 34022115



LIGHT GREY-SILVER 34022114

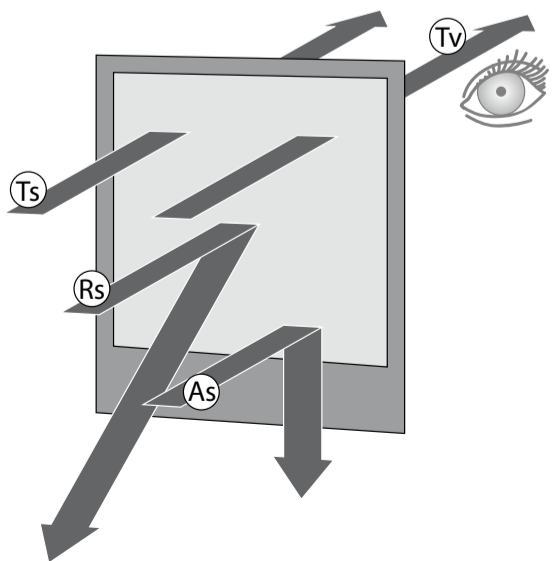


WHITE-SILVER 34022111



IVORY-SILVER 34022113

	composition	weight [g/m ²]	thickness	fire classification	ultraviolet test UV	openness factor [%]	Ts [%]	Rs [%]	As [%]	Tv [%]	application
Grey-Silver	trevira cs	220	0.43	M1	5-6/8	1	4	53	43	2	int
Light Grey-Silver	trevira cs	220	0.43	M1	5-6/8	1	5	46	49	2	int
White-Silver	trevira cs	220	0.43	M1	5-6/8	1	6	50	44	4	int
Ivory-Silver	trevira cs	220	0.43	M1	5-6/8	1	6	49	45	3	int



Ts - Solar transmittance: proportion of solar energy transmitted through the fabric. A low percentage means the fabric performs well at reducing solar energy,

Rs - Solar reflectance: proportion of solar radiation reflected by the fabric. A high percentage means the fabric performs well at reflecting solar energy,

As - Solar absorptance: proportion of solar radiation absorbed by the fabric. A low percentage means the fabric absorbs little solar energy,

Tv - Visible light transmittance: total percentage of light radiated through the fabric over a wavelength of 380 to 780 nm (nanometers), called the visible spectrum (total illumination).

Solar radiation is always partially transmitted through, absorber or reflected by the fabric. The sum of all equals 100.

$$Ts + Rs + As = 100\% \text{ of solar energy}$$

The pictures are presented for illustration purpose only, differences in tones are permissible. Any difference in tone does not constitute grounds for complaint.